

## SensorVault™

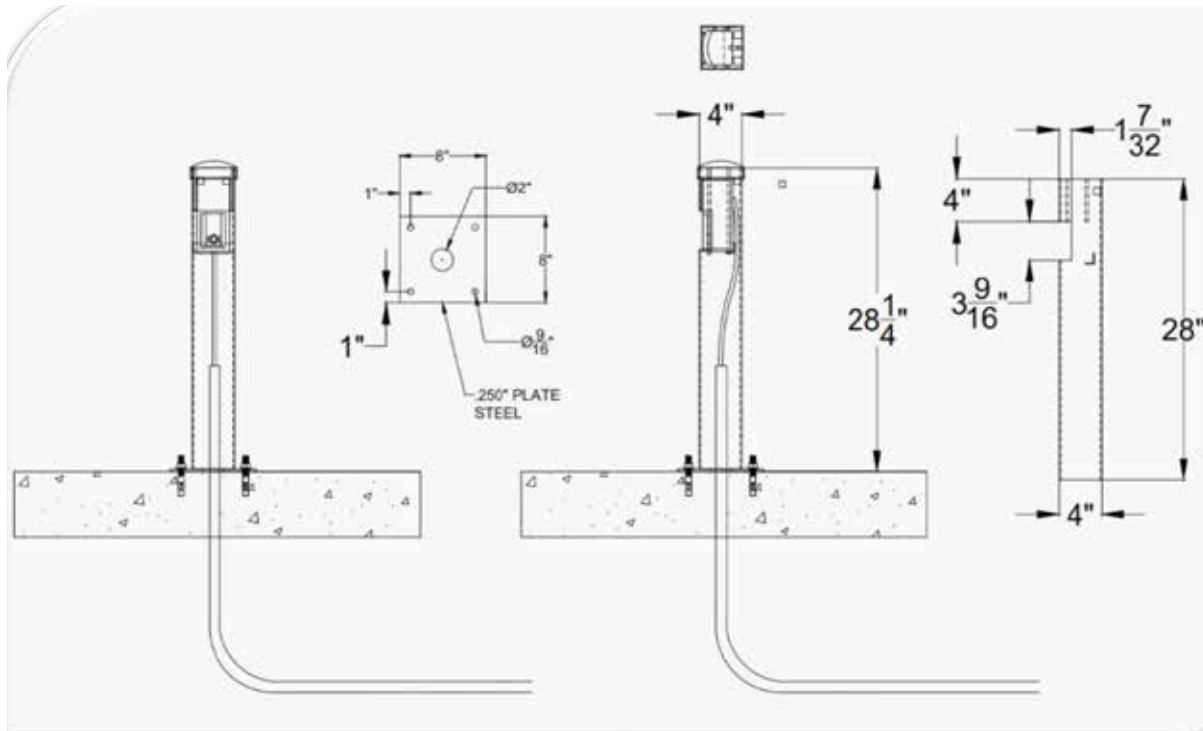


### Features

- Structural construction protects Optex Reader for long life and reliable operation
- Aesthetic design with safety (Yellow) or discrete (Black) paint options
- Easy 4-bolt installation on concrete pad. Accommodates wire run from below or rear.
- Vandal resistant
- Lexan cover protects electronics
- Fully illustrated instructions for easy install and set up



# TORXUN SENSORVAULT



## Technical Data

Facility	Data
Weight	19 lbs
Steel	.120" / 11 gauge post, 1/4" flange plate
Dimensions	4"x4"x29" post, 8"x8" base
Finish	Powder Coat

## Ordering Details

Product	Part #
Powder Coated Safety Yellow	1100.001Y
Powder Coated Black	1100.001B
5-year warranty	

## About TORXUN

TORXUN Vehicle Access Technologies engineers architectural-grade products for vehicle access controlled systems. Everything is produced in Tracy, California.



Precision Handcrafted  
in Northern California  
from U.S. Steel.